

EVIO Labs Medford (pka Kenevir Research)
 540 East Vilas Road, Suite F, Central Point, OR 97502
 541-668-7444 / OLCC 010-1001626980D / www.EVIOLabs.com

Sour Lifter Hemp Worldwide Info Only



Confident Cannabis ID: 2010KR0150.5498

Sample ID: M201698-02

Matrix: Hemp

METRC Batch #:

Sampling Method/SOP: Client

Date Sampled: NA

Date Accepted: 10/20/20

Harvest/Process Lot ID:

Batch ID:

Batch Size (g):

Unit for Sale:

Harvest/Production Date:

Cannabinoid Analysis

FOR INFORMATIONAL USE ONLY - NOT FOR REGULATORY PURPOSES

Date/Time Extracted: 10/21/20 10:00

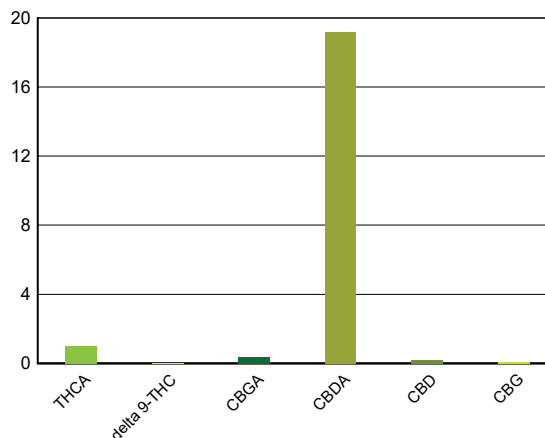
Analysis Method/SOP: SOP.T.40.020

Date/Time Analyzed: 10/22/20 00:15

Cannabinoids	LOQ(%)	mg/g	% weight	Cannabinoid Profile
--------------	--------	------	----------	---------------------

Total THC ((THCA*0.877)+Δ9THC)		8.86	0.886	
Total CBD ((CBDA*0.877)+CBD)		170.38	17.038	

THCA	0.0400	10.10	1.01
delta 9-THC	0.0400	< LOQ	< LOQ
delta 8-THC	0.0400	< LOQ	< LOQ
THCV	0.0400	< LOQ	< LOQ
CBGA	0.0400	3.91	0.391
CBDA	0.0400	192.00	19.2
CBD	0.0400	2.00	0.200
CBDV	0.0400	< LOQ	< LOQ
CBN	0.0400	< LOQ	< LOQ
CBG	0.0400	0.72	0.0716
CBC	0.0400	< LOQ	< LOQ
THCV-A	0.0400	0.46	0.0458
CBDV-A	0.0400	3.94	0.394
CBCA	0.0400	9.43	0.943
Sum of tested Cannabinoids	0.0400	222.00	22.2



Moisture Content

Date/Time Analyzed: 10/21/20 00:00
 Analysis Method/SOP: SOP.T.40.010

Moisture: 13.8 %

"Total THC" and "Total CBD" are calculated values and are an Oregon reporting requirement (OAR 333-064-0100). For Cannabinoid analysis, only delta 9-THC, THCA, CBD, CBDA are ORELAP accredited analytes. Cannabinoid values reported for plant matter are dry weight corrected; Oregon Water Activity action level is 0.65Aw and Oregon Moisture Content action level is 15%, Samples above limit will be highlighted RED; FD = Field Duplicate; LOQ = Limit of Quantitation.

Stephanie Moon
 Laboratory Director - 10/26/2020

Page 1 of 2

EVIO Labs Medford (pka Kenevir Research)
540 East Vilas Road, Suite F, Central Point, OR 97502
541-668-7444 / OLCC 010-1001626980D / www.EVIOLabs.com

Quality Control

Batch: M20J116 - SOP.T.30.050 Prep for Cannabinoids

Blank(M20J116-BLK1)			Extracted: 10/21/20 10:00		Analyzed: 10/21/20 21:14		
Analyte	Result	LOQ	Recovery Limits	Analyte	Result	LOQ	Recovery Limits
THCA	< LOQ	0.0400 (%)	< LOQ	delta 9-THC	< LOQ	0.0400 (%)	< LOQ
delta 8-THC	< LOQ	0.0400 (%)	< LOQ	THCV-A	< LOQ	0.0400 (%)	< LOQ
THCV	< LOQ	0.0400 (%)	< LOQ	CBDA	< LOQ	0.0400 (%)	< LOQ
CBD	< LOQ	0.0400 (%)	< LOQ	CBDV-A	< LOQ	0.0400 (%)	< LOQ
CBDV	< LOQ	0.0400 (%)	< LOQ	CBG	< LOQ	0.0400 (%)	< LOQ
CBGA	< LOQ	0.0400 (%)	< LOQ	CBN	< LOQ	0.0400 (%)	< LOQ
CBCA	< LOQ	0.0400 (%)	< LOQ	CBC	< LOQ	0.0400 (%)	< LOQ
Sum of tested Cannabinoid:	< LOQ	0.0400 (%)	< LOQ				

LCS(M20J116-BS1)			Extracted: 10/21/20 10:00		Analyzed: 10/21/20 21:31		
Analyte	% Recovery	LOQ	Recovery Limits	Analyte	% Recovery	LOQ	Recovery Limits
THCA	92.2	(%)	70-130	delta 9-THC	94.1	(%)	70-130
THCV	86.8	(%)	70-130	CBDA	93.6	(%)	70-130
CBD	94.1	(%)	70-130	CBG	93.5	(%)	70-130
CBGA	93.4	(%)	70-130	CBN	103	(%)	70-130
CBCA	94.1	(%)	70-130	CBC	87.4	(%)	70-130

Batch: M20J117 - SOP.T.40.010 Moisture Content

Blank(M20J117-BLK1)			Extracted: 10/21/20 00:00		Analyzed: 10/21/20 00:00		
Analyte	Result	LOQ	Recovery Limits	Analyte	Result	LOQ	Recovery Limits
Percent Moisture	100	(%)	< LOQ				



Stephanie Moon
 Laboratory Director - 10/26/2020